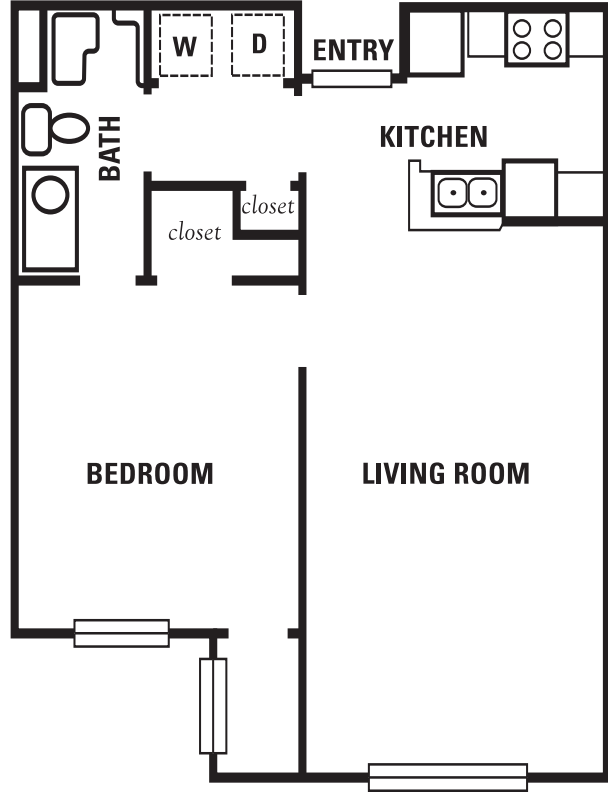




# FLOOR PLAN A

- 9 foot ceilings
- Fully-equipped modern kitchen
- Oversize showers with grab bars & seats in most homes
- Cable TV & high-speed internet connections
- Accessible features throughout
- Spacious master suite with walk-in closet
- Emergency call system available
- Washer/dryer hookups
- Fire/smoke detectors, sprinklers
- Total electric energy-efficient construction



**one bedroom/one bath/716 sf**

address \_\_\_\_\_

application fee \$ \_\_\_\_\_

monthly rent \$ \_\_\_\_\_

security deposit \$ \_\_\_\_\_



## NORMAN BERRY VILLAGE

2834 N. Berry Drive

East Point, Georgia 30334-3500

404.767.3441 office · 404.767.3445 fax

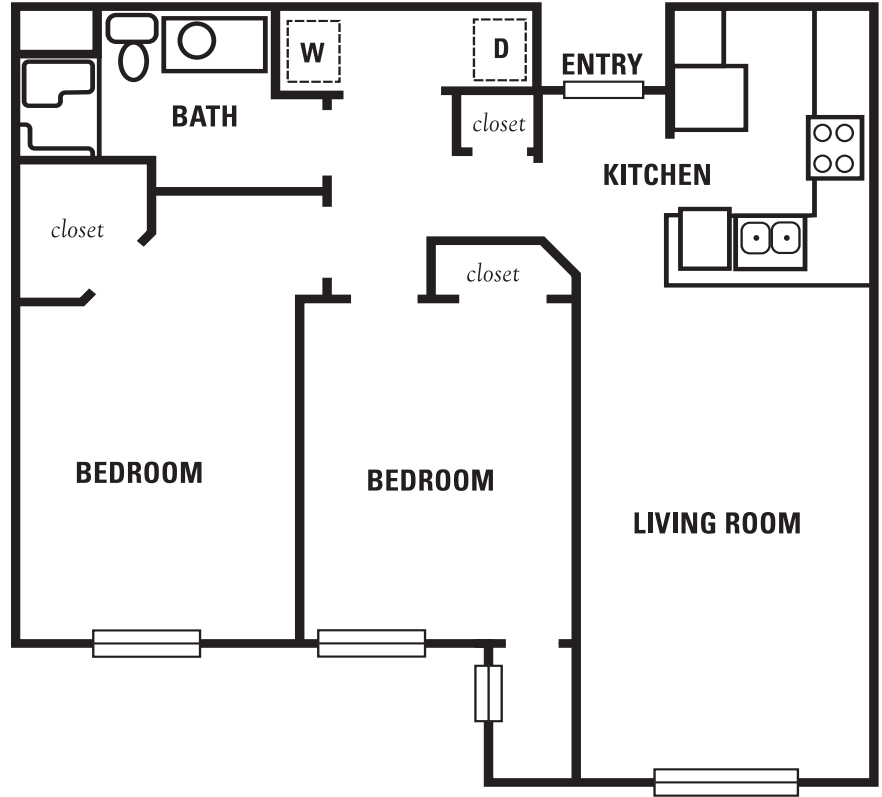
[www.NormanBerryVillage.com](http://www.NormanBerryVillage.com)

[NormanBerryVillage@NorSouth.com](mailto:NormanBerryVillage@NorSouth.com)



# FLOOR PLAN B

- 9 foot ceilings
- Fully-equipped modern kitchen
- Oversize showers with grab bars & seats in most homes
- Cable TV & high-speed internet connections
- Accessible features throughout
- Spacious master suite with walk-in closet
- Emergency call system available
- Washer/dryer hookups
- Fire/smoke detectors, sprinklers
- Total electric energy-efficient construction



**two bedroom/one bath/999 sf**

address \_\_\_\_\_

application fee \$ \_\_\_\_\_

monthly rent \$ \_\_\_\_\_

security deposit \$ \_\_\_\_\_



## NORMAN BERRY VILLAGE

2834 N. Berry Drive

East Point, Georgia 30334-3500

404.767.3441 office · 404.767.3445 fax

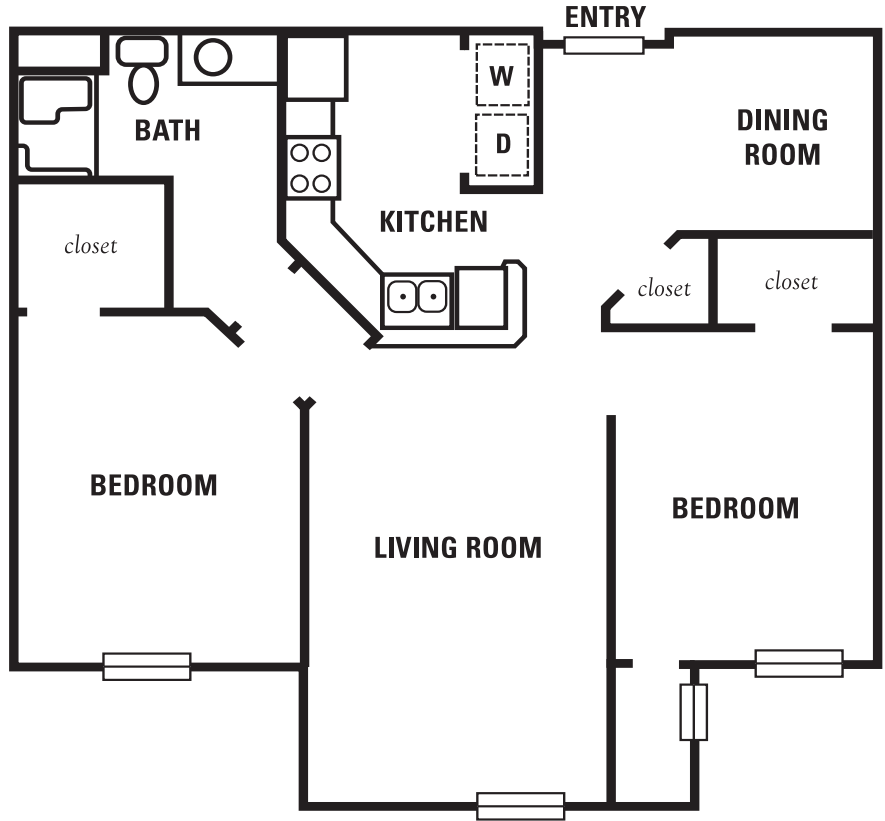
[www.NormanBerryVillage.com](http://www.NormanBerryVillage.com)

[NormanBerryVillage@NorSouth.com](mailto:NormanBerryVillage@NorSouth.com)



# FLOOR PLAN C

- 9 foot ceilings
- Fully-equipped modern kitchen
- Oversize showers with grab bars & seats in most homes
- Cable TV & high-speed internet connections
- Accessible features throughout
- Spacious master suite with walk-in closet
- Emergency call system available
- Washer/dryer hookups
- Fire/smoke detectors, sprinklers
- Total electric energy-efficient construction



**two bedroom/one bath/1010 sf**

address \_\_\_\_\_

application fee \$ \_\_\_\_\_

monthly rent \$ \_\_\_\_\_

security deposit \$ \_\_\_\_\_



## NORMAN BERRY VILLAGE

2834 N. Berry Drive

East Point, Georgia 30334-3500

404.767.3441 office · 404.767.3445 fax

[www.NormanBerryVillage.com](http://www.NormanBerryVillage.com)

[NormanBerryVillage@NorSouth.com](mailto:NormanBerryVillage@NorSouth.com)



# FLOOR PLAN D

9 foot ceilings

Fully-equipped modern kitchen

Oversize showers with grab bars & seats in most homes

Cable TV & high-speed internet connections

Accessible features throughout

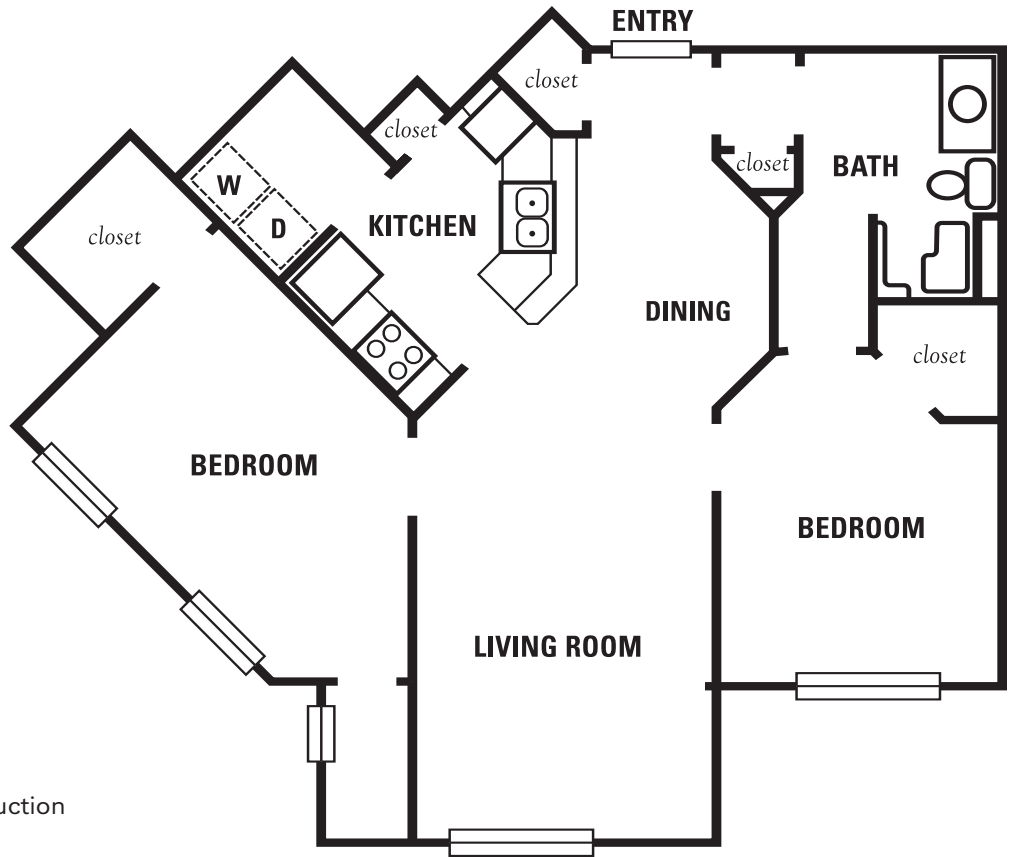
Spacious master suite with walk-in closet

Emergency call system available

Washer/dryer hookups

Fire/smoke detectors, sprinklers

Total electric energy-efficient construction



**two bedroom/one bath/1011 sf**

address \_\_\_\_\_

application fee \$ \_\_\_\_\_

monthly rent \$ \_\_\_\_\_

security deposit \$ \_\_\_\_\_



## NORMAN BERRY VILLAGE

2834 N. Berry Drive

East Point, Georgia 30334-3500

404.767.3441 office · 404.767.3445 fax

[www.NormanBerryVillage.com](http://www.NormanBerryVillage.com)

[NormanBerryVillage@NorSouth.com](mailto:NormanBerryVillage@NorSouth.com)